

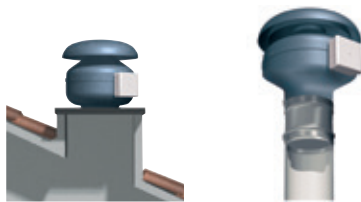
CA-ROOF

Centrifugal roof fans for extraction from chimneys in houses



In-line centrifugal extractor with built-in cap for air extraction or ventilation, for use in individual dwellings or community housing.

- Designed for continuous working, in any position
- Optionally supplied with base or for direct connection to flue, depending on model



B version

C version

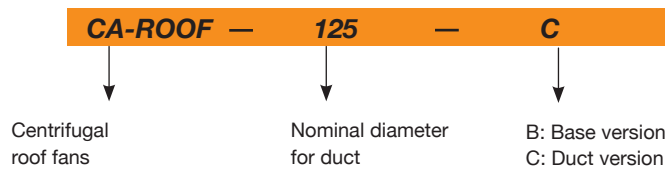
Construction:

- Galvanised sheet base plate
- Impeller with backward-curved blades
- Galvanised sheet rain deflector hood
- Treated with rust-inhibitor paint

Motor:

- Motor with Long Life ball bearings, IPX4 protection
- Single-phase 230V.50 Hz.
- Fan working temperature: -20°C +50°C
- Automatically reset thermal protector

Order code

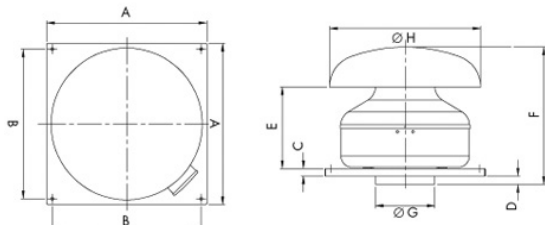


Technical characteristics

Model	Speed (r/min)	Maximum admissible current (A) 220-240V	Max. electric power (W)	Maximum airflow (m³/h)	Irradiated* Sound Level dB(A)	Weight (Kg)
CA/ROOF 125	2300	0.34	75	350	54	5
CA/ROOF 150	2370	0.34	80	450	56.5	7
CA/ROOF 160	2650	0.68	150	750	64	8.8
CA/ROOF 200	2700	0.69	160	850	63	8
CA/ROOF 250	2430	0.80	180	1180	61.5	9.9
CA/ROOF 315	2480	1.10	250	1600	64.5	11

*Irradiated sound pressure level are free field measurements at 3 metres

Dimensions in mm



Model	A	B	C	D	E	F	Ø G	Ø H
CA/ROOF 125	334	280	20	2	193	290	122	300
CA/ROOF 150	424	370	20	17	198	340	147	400
CA/ROOF 160	424	370	20	22	214	361	157	400
CA/ROOF 200	424	370	20	17	203	345	197	534
CA/ROOF 250	489	435	20	27	193	376	247	534
CA/ROOF 315	489	435	20	21	226	403	312	534

Accessories

See accessories section



Characteristic Curves

Q = Airflow in m³/h, m³/s and cfm.

Pe = Static pressure in mmH₂O, Pa and inwg.

