

# CJBD CJBD/AL



**CJBD: Soundproofed ventilation units fitted with double-inlet fans, CBD series**

**CJBD/AL: Soundproofed ventilation units with profiles in aluminium and prepainted sheet metal, fitted with CBD series double-inlet fans**



CJBD



CJBD/AL

**Fan:**

- Galvanised sheet steel structure with thermal insulation and soundproofing.
- Impeller with forward-facing blades made from galvanised sheet steel
- Stuffing-box for cable inlet
- CJBD/AL: with aluminium profiles and pre-lacquered sheet

**Motor:**

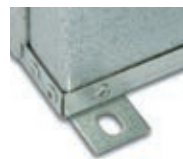
- Class F closed motors with incorporated thermal protector, ball bearings and IP-54 protection
- Single-phase 220-240V.-50Hz. and three-phase 220-240/380-415V.-50Hz.
- Max. air temperature to transport: -20°C.+60°C.

**Finish:**

- Anticorrosive galvanized sheet steel

**On request:**

- With circular inlet



CJBD: Includes base stand to aid installation

**Order code**

CJBD	—	2525	—	6M	—	1/3
CJBD: Soundproofed ventilation units		Impeller size in mm		Number of motor poles		T=Three-phase
CJBD/AL: With aluminium profiles and pre-lacquered sheet		<u>mm</u> <u>inches</u>		4=1400 r/min 50 Hz		M=Single-phase
CJBD/INT: Soundproofed ventilation with built-in switch		1919    7/7		6=900 r/min 50 Hz		Motor power (CV)
CJBD/C: Ventilation units with circular inlet/outlet		2525    9/9				
CJBD/F: Ventilation units with built-in filters		2828    10/10				
CJBD/ALS: Ventilation units with double wall of insulation and pre-lacquered sheet		3333    12/12				
CJBD/ALF: Ventilation units with pre-lacquered sheet and built-in filters		3939    15/15				

**Options**



CJBD/INT



CJBD/C



CJBD/F



CJBD/ALS



CJBD/ALF

## Technical characteristics

Model			Speed (r/min)	Maximum admissible current (A)		Installed power (kW)	Maximum airflow (m³/h)	Sound level dB(A)	Approx. weight (Kg)	
				230V	400V				CJBD	CJBD/AL
CJBD	CJBD/AL	1919-4M 1/5	1230	1.40		0.15	1520	58	19.4	22.5
CJBD	CJBD/AL	1919-6M 1/10	820	0.85		0.08	1230	53	19.4	22.5
CJBD	CJBD/AL	2525-4M 1/2	1320	3.30		0.37	2800	66	28.1	31.8
CJBD	CJBD/AL	2525-4M 3/4	1310	4.50		0.55	3600	70	28.9	32.6
CJBD	CJBD/AL	2525-6M 1/5	850	1.50		0.15	2200	59	26.4	30.1
CJBD	CJBD/AL	2525-6M 1/3	830	2.20		0.25	2700	61	27.6	31.3
CJBD	CJBD/AL	2828-4M 1/2	1320	3.30		0.37	2800	65	33.0	37.3
CJBD	CJBD/AL	2828-4M 3/4	1310	4.50		0.55	3950	70	33.8	38.1
CJBD	CJBD/AL	2828-6M 1/3	830	2.20		0.25	3200	61	32.5	36.8
CJBD	CJBD/AL	3333-6T 1 1/2	850	6.60	3.80	1.10	7800	74	47.9	53.8
CJBD	CJBD/AL	3333-6M 3/4	850	5.00		0.55	4900	63	46.4	52.3
CJBD	CJBD/AL	3333-6M 1	850	6.00		0.75	6000	70	47.4	53.3
CJBD	CJBD/AL	3939-6T 3	890	10.90	6.30	2.20	11900	74	71.8	80.0



## Erp. BEP (best efficiency point) characteristics

Available features best efficiency point (BEP), CBD series

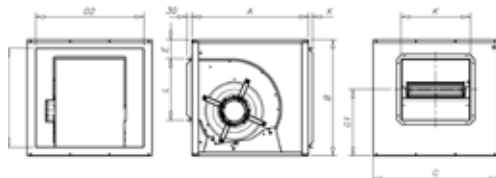
## Acoustic features

Sound power Lw(A) spectrum in dB(A) via frequency band in Hz.

Model	63	125	250	500	1000	2000	4000	8000	Model	63	125	250	500	1000	2000	4000	8000
CJBD-1919-4M 1/5	43	54	58	62	64	63	62	53	CJBD-2828-4M 3/4	55	66	70	74	76	75	74	65
CJBD-1919-6M 1/10	38	49	53	57	59	58	57	48	CJBD-2828-6M 1/3	46	57	61	65	67	66	65	56
CJBD-2525-4M 1/2	51	62	66	70	72	71	70	61	CJBD-3333-6T 1 1/2	59	70	74	78	80	79	78	69
CJBD-2525-4M 3/4	55	66	70	74	76	75	74	65	CJBD-3333-6M 3/4	48	59	63	67	69	68	67	58
CJBD-2525-6M 1/5	44	55	59	63	65	64	63	54	CJBD-3333-6M 1	55	66	70	74	76	75	74	65
CJBD-2525-6M 1/3	46	57	61	65	67	66	65	56	CJBD-3939-6T 3	61	72	77	81	83	81	80	71
CJBD-2828-4M 1/2	50	61	65	69	71	70	69	60									

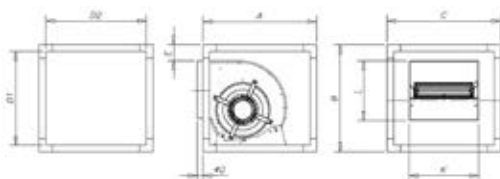
## Dimensions in mm

### CJBD



	Equiv. in inches	A	B	C	E	D1	D2	G1	L	K	X (without filter)	X (with filter)
CJBD-1919	7/7	450	460	500	110	370	410	245	210	232	25	30
CJBD-2525	9/9	500	522	550	107	426	454	283,5	263	300	25	30
CJBD-2828	10/10	550	575	600	105,5	479	504	324,5	292	326	25	30
CJBD-3333	12/12	650	650	700	106	554	604	372,5	345	387	25	30
CJBD-3939	15/15	800	755	800	109	659	704	443	404	473	25	30

### CJBD/AL



	Equiv. in inches	A	B	C	D1	D2	E	L	K
CJBD/AL-1919	7/7	460	460	460	420	420	88	202	225
CJBD/AL-2525	9/9	520	520	520	480	480	110	265	295
CJBD/AL-2828	10/10	575	575	575	535	535	122	286	322
CJBD/AL-3333	12/12	650	650	650	610	610	108	339	384
CJBD/AL-3939	15/15	755	755	755	695	695	108	410	471

## Characteristic Curves

See characteristic curves, CBD series.

## Accessories

See accessories section.

